



# MOUNTAIN DANCE SCHEDULE 2024-2025

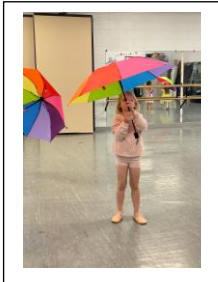
## Creative Ballet & Gymnastics Combo

(3-5yrs)

This class includes a 10-minute warm-up, 25 minutes of dance and 25 minutes of gymnastics.

Saturday 10:15-11:15

## Imagination Combination (3-8yrs)



These classes will introduce your dancer to the world of dance technique along with fun and imaginative creative dance activities. We use fun props, music, and stories to enhance our classes each week! Please sign up for an age-appropriate class as each age group offers a new progression.

Classes with a \* will have the option to perform in our **Nutcracker with a Twist!**

### **Mini Imagination Ballet (3-5yrs)**

\*Tuesday - 11:45am-12:30pm

### **Mini Imagination Ballet & Tap (3-5yrs)**

\*Monday – 10:30-11:30am

\*Saturday – 11:15-12:15pm

### **Mini Imagination Ballet, Tap & More (3-5yrs)**

\*Thursday – 10:00-11:30am

### **Petite Imagination Ballet (4-6yrs)**

\*Monday 11:45-12:30pm

### **Petite Imagination Ballet & Tap (4-6yrs)**

\*Thursday 4:00-5:00pm

### **Young Imagination Ballet & Jazz (5-8yrs)**

\*Wednesday 4:00-5:00pm

### **Young Imagination Ballet, Tap & Jazz (5-8yrs)**

\*Thursday 4:00-5:00pm

\*Saturday 9:00-10:00am

## Combined Classes (8+yrs)

### **Ballet & Jazz 1**

Tuesday 4:00-5:30pm

### **Ballet & Jazz 2**

Tuesday 4:00-5:30pm

## Ballet Classes (11+yrs)

### **Ballet 3/4**

Wednesday 6:00—7:00pm

### **Ballet 5-6**

Wed. 6:00-8:00pm &

Fri. 5:30-6:45pm

## Jazz Classes (11+yrs)

### **Jazz 3/4**

Monday 5:15-6:30pm

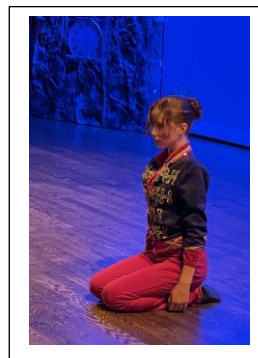
### **Jazz 5-6**

Monday 5:15-6:30pm

## Tap Classes (6+yrs)

### **Tap**

Thursday 5:00-6:00pm





# MOUNTAIN DANCE SCHEDULE 2024-2025

## Specialty Classes (4+yrs)

**\*Young Jazzy Hip-Hop (6-10yrs)**

Monday 4:15-5:15pm

**\*Petite Hip-Hop (4-6yrs)**

Friday 11:45-12:30pm

**\*Hip-Hop**

Thursday 6:00-7:00pm

**\*Contemporary & Modern  
(11+yrs)**

Friday 4:30-5:30pm

**\*Teen Lyrical (11+yrs)**

Tuesday 6:30-7:30pm

## Mountain Dance Companies

Our dance companies for children offer many performance opportunities and build confidence and grace!

Contact us to join today!

\*Additional classes are required.

**Elevation Dance Company (3rd-5th)**

Tuesday 5:30-6:30pm

**Peak Dance Company (6th+)**

Monday 6:30-7:30pm

**Mountain Dance Company (9th+)**

Monday 6:30-7:30pm



### TUITION:

45min class \$83/4 wks.

1 hr. gym/dance combo \$112/4 wks.

1 hr. class \$92/4 wks.

1 ¼ hr. class \$108/4 wks.

1 ½ hr. class \$111/4 wks.

2 hr. class \$146/4 wks.

3 hr. class \$165/4 wks.

Unlimited \$410/4 wks.

\*Classes need a minimum of 6 students enrolled.

Maximum size depends on age of students.

